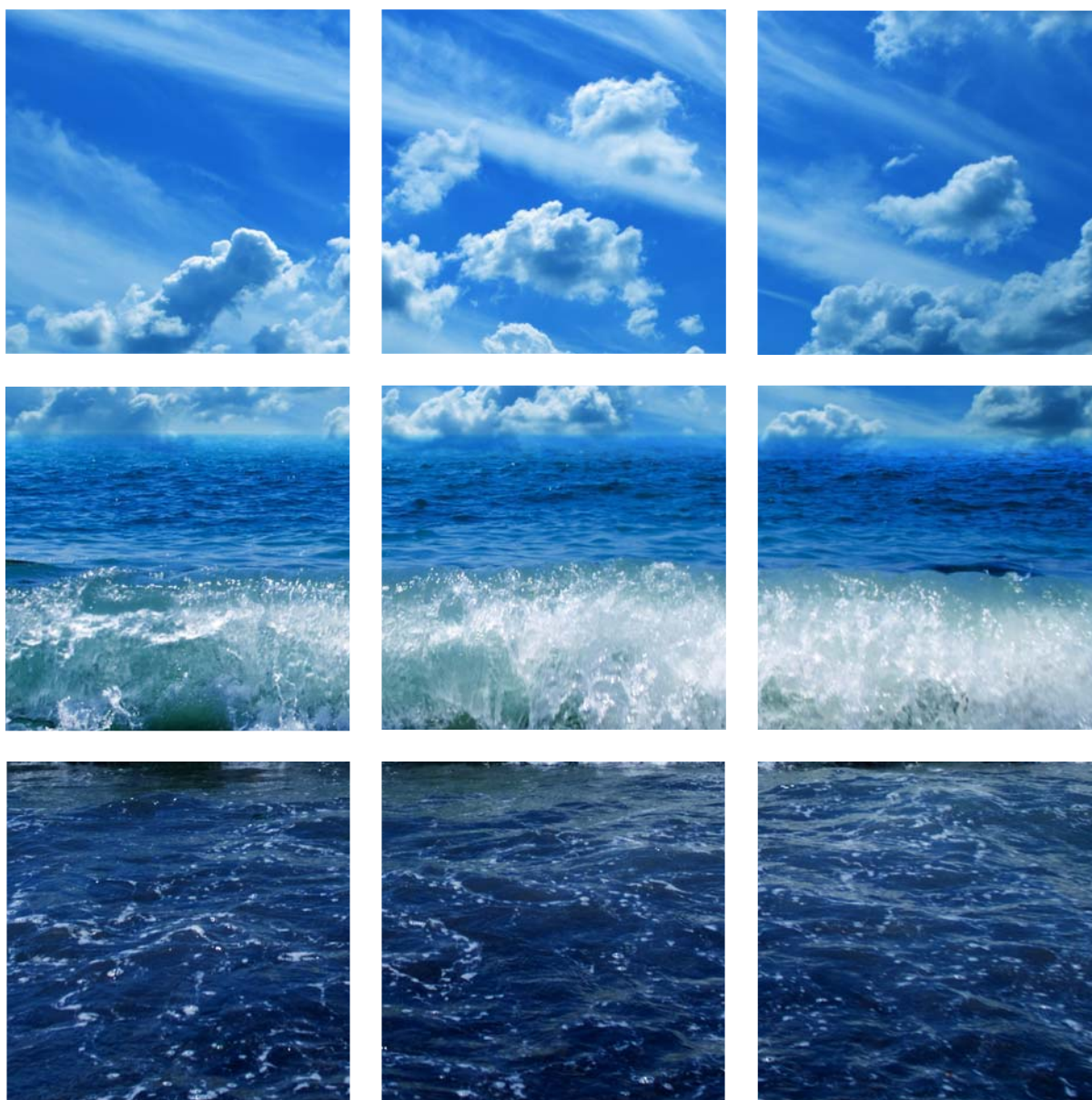


# Irish Coastal Protection Strategy Study

## Phase 4 - South West Coast

Work Packages 2, 3 & 4A - Appendix 4- Erosion Mapping

IBE0388/November 2013







**Office of Public Works**

**Irish Coastal Protection Strategy Study - Phase 4**

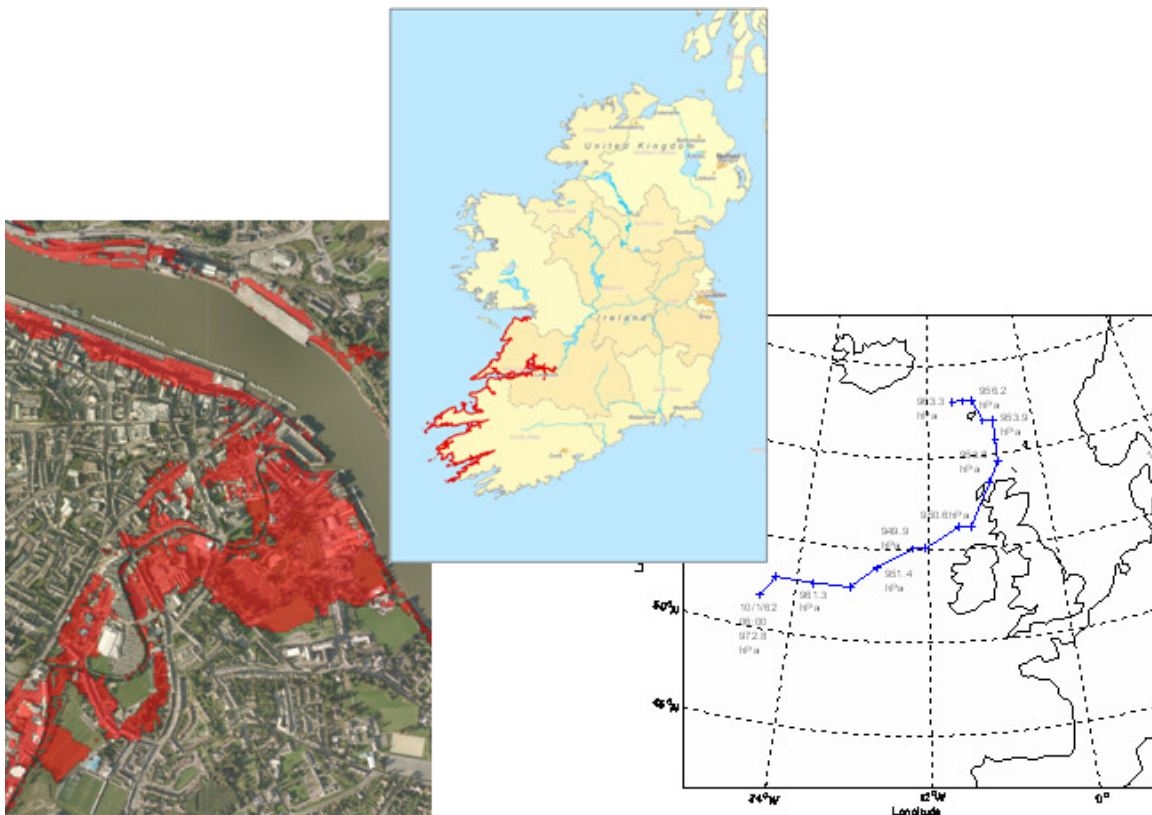
**Work Packages 2, 3 & 4A**

**Strategic Assessment of Coastal Flooding and Erosion Extents**

**South West Coast – Bantry Bay to Ballyvaghan Bay**

Appendix 4 - Erosion Mapping

November 2013



**Office of Public Works**

**Irish Coastal Protection Strategy Study - Phase 4**

**Work Packages 2, 3 & 4A**

**Strategic Assessment of Coastal Flooding and Erosion Extents**

**South West Coast – Bantry Bay to Ballyvaghan Bay**

Appendix 4 - Erosion Mapping

November 2013

**DOCUMENT CONTROL SHEET**

Client	Office of Public Works					
Project Title	Irish Coastal Protection Strategy Study, Phase IV, Work Package 2, 3, & 4A					
Document Title	Strategic Assessment of Coastal Flooding and Erosion Extents					
Document No.	IBE0388Rev01_APP4					
This Document Comprises	DCS	TOC	Text	List of Tables	List of Figures	No. of Appendices
	1	-	4	-	-	1

## IMPORTANT DISCLAIMER, GUIDANCE NOTES AND CONDITIONS OF USE FOR EROSION MAPS

Please read the disclaimer, guidance notes and conditions of use below carefully to avoid incorrect interpretation of the information and data provided on the maps contained in this volume. The maps must be used only in conjunction with these notes, and must not be used in isolation.

### PURPOSE OF THE MAPS

The maps contained within this bound volume were prepared under the following project:

- ***Project Name: Irish Coastal Protection Strategy Study (ICPSS)***
- ***Project Period: 2006 – 2013***

The maps were prepared for the purpose of assessing the degree of erosion hazard and risk to assist in the identification and development of measures for managing the erosion risk. They may, however, also be of use to the public, Local Authorities and other parties as indicative maps of erosion-prone areas for a range of purposes, including raising awareness of erosion hazard and risk, assisting in planning and development decisions etc.

### DISCLAIMER

The Office of Public Works makes no representations, warranties or undertakings about any of the information provided on these maps including, without limitation, their accuracy, their completeness or their quality or fitness for any particular purpose.

To the fullest extent permitted by applicable law, neither the State, the Office of Public Works nor any of its members, officers, associates, consultants, employees, affiliates, servants, agents or other representatives shall be liable for loss or damage arising out of, or in connection with, the use of, or the inability to use, the information provided on these maps including, but not limited to, indirect or consequential loss or damages, loss of data, income, profit, or opportunity, loss of, or damage to, property and claims of third parties, even if the Office of Public Works has been advised of the possibility of such loss or damages, or such loss or damages were reasonably foreseeable.

The Office of Public Works reserves the right to change the content and / or presentation of any of the information provided on these maps at its sole discretion, including these notes and disclaimer.

This disclaimer, guidance notes and conditions of use shall be governed by, and construed in accordance with, the laws of the Republic of Ireland. If any provision of these disclaimer, guidance notes and conditions of use shall be unlawful, void or for any reason unenforceable, that provision shall be deemed severable and shall not affect the validity and enforceability of the remaining provisions.

## GUIDANCE NOTES

This bound volume contains two sets of erosion maps with the predicted future position of the coastline in 2030 and 2050 indicated. How these maps have been derived, and what they do and do not present, is described below.

### *Derivation of Maps*

The maps included within this bound volume are ‘predictive’ erosion maps, as they provide the future predicted position of the coastline, and are developed by various analyses as described below.

A comparison of the best available current and historical mapping and aerial photography was used to estimate the annual rate of change in the coastline position and hence to predict the likely future position of the coastline in the years 2030 and 2050. The rate of coastline change (annual erosion rate) for future years was assumed to be the same as in the past.

An erosion ‘baseline’ was derived from the visible vegetation line shown on the Ordnance Survey Ireland (OSi) year 2000 aerial photography, or where appropriate, the cliff top line, and this was used as the basis for generating the year 2030 and 2050 erosion maps.

In developing the erosion maps, the coast was divided into nominal lengths, typically 25m, and an annualised average rate of coastal retreat applicable to each sector established. The resulting preliminary erosion lines contained a number of steps, where the annualised rate of erosion derived from the comparison of aerial photographic series changed between adjacent sectors. These preliminary lines were subsequently reviewed by an experienced Coastal Engineer and the transitions between the various sectors modified based on an assessment of coastal form and underlying geology as derived from Geological Survey of Ireland (GSI) quaternary (subsoil) geological mapping.

The maps have been produced at a strategic level, and minor or local features may not have been included in their preparation. Therefore, the maps should not be used to assess the erosion hazard and risk associated with individual properties or point locations, or to replace a detailed local erosion hazard and risk assessment.

In contrast to the floodplain mapping, it was not possible to eliminate the effect of existing coastal defence structures from the erosion hazard and risk assessment. Consequently there will be areas where no erosion line is shown that are at risk from erosion, should the present defences fail or not be maintained in the future. Equally there may be an erosion line shown in areas that are now adequately defended by coastal protection structures that were introduced during or after the assessment period.

Detailed explanations of the methods of derivation, survey data used, etc. are provided in the relevant reports produced for the project under which the maps were prepared. **Users of the maps should familiarise themselves fully with the contents of these reports in advance of the use of the maps.**



### ***Uncertainty***

Although great care and modern, widely-accepted best practice methods have been used to prepare the predictive erosion maps, there is a range of inherent uncertainties within the process of preparing these maps. These include:

- Uncertainty in the underlying geology and hence in the annual rate of coastal change
- Uncertainty in the protected status of the coast
- Uncertainty in the resolution of the assessment
- Uncertainty in the geographical accuracy of historical imagery (A principal source of inaccuracy in this analysis was the geo-referencing and rectification of historical aerial photography)

The erosion maps are therefore only indicative, and the potential for inaccuracy should be recognised if these maps are to be used for any purpose. Analysis of the confidence of the erosion lines or extents has not been undertaken for the south west, west or north west coastal areas.

### ***Sets of Erosion Maps***

There are two sets of erosion maps presented, illustrating the estimated future position of the coastline in the years 2030 and 2050, together with the erosion baseline derived from the OSi aerial photography. These are displayed at a scale of 1:25,000 relative to OSi discovery series raster maps. Further details on these maps, including the methods of derivation, assumptions made, data used, etc. are provided in the relevant project reports.

Due to the various uncertainties within the process of preparing the maps (see 'Uncertainty' above), it is not possible to state that the maps are absolutely accurate.

### ***Consideration of Projected Future Changes in Climate and Other Future Changes***

The erosion maps have been produced for existing conditions only and do not currently include for projected future changes in climate such as sea level rise, increased storm frequency or associated variations in erosion rates. Neither do they include for variations in erosion rates due to planned coastal protection or dredging works or other potential changes of a geological nature.

## **CONDITIONS OF USE**

Please read the following statements and conditions of use of the maps in this bound volume carefully. Use of these maps is conditional upon the following:-

The user of these maps shall be deemed to have agreed to, and unconditionally accepted all of these statements and conditions.

The user is deemed to have read in full, understood and accepted all of the above disclaimer, guidance notes and statements concerning the preparation, limitations and use of the maps in this bound volume.

The user acknowledges that the erosion-related data presented on the maps contained within this bound volume are copyright of the Office of Public Works.

The user agrees that the Office of Public Works has the absolute right to reprocess, revise, add to, or remove any of the information shown on these maps at any time, and that this will in no way render them, the State or its servants or agents liable for any damage or cost incurred as a result of such acts.

The user will use any data shown on these maps in an appropriate and responsible manner and in accordance with this disclaimer, guidance notes and conditions of use.

The user understands that the Office of Public Works does not guarantee the accuracy of any of the data shown on these maps and it is the user's responsibility to independently verify and quality control any of the data used and ensure that it is fit for their intended use.

The user will not pass on any of the maps to any third party without ensuring that said party is fully aware of this disclaimer, guidance notes and conditions of use.

The user accepts all responsibility for the use by them of the information shown on these maps, or that which is passed to a third party by them, and will in no way seek to hold the State or the Office of Public Works, its servants or agents liable for any damage or loss howsoever arising out of the use or interpretation of this information.

## **CONTACTS REGARDING MAP INFORMATION**

Any user who has reason to believe that these maps contain an error, or who wishes to contribute additional information, is requested to contact the Office of Public Works Engineering Services Section at the following address:

Erosion Mapping Queries  
Engineering Services  
Office of Public Works  
17-19 Lower Hatch Street  
Dublin 2