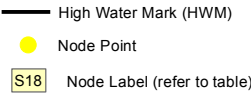
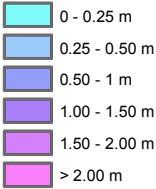


DEPTH MAP 0.5%AEP

Legend:

Depth Grid



USER NOTE :

USERS OF THESE MAPS SHOULD REFER TO THE DETAILED DESCRIPTION OF THEIR DERIVATION, LIMITATIONS IN ACCURACY AND GUIDANCE AND CONDITIONS OF USE PROVIDED AT THE FRONT OF THIS BOUND VOLUME. IF THIS MAP DOES NOT FORM PART OF A BOUND VOLUME, IT SHOULD NOT BE USED FOR ANY PURPOSE.



Project :  
IRISH COASTAL PROTECTION STRATEGY  
STUDY - PHASE IV

Map :  
SHANNON ESTUARY FLOOD DEPTH MAP

Map Type : DEPTH  
Return Period 0.5% AEP EVENT  
Source : TIDAL FLOODING  
Map area : RURAL AREA  
Scenario : CURRENT

Figure By : PJW Date : JUN 2011  
Checked By : JMC Date : JUN 2011

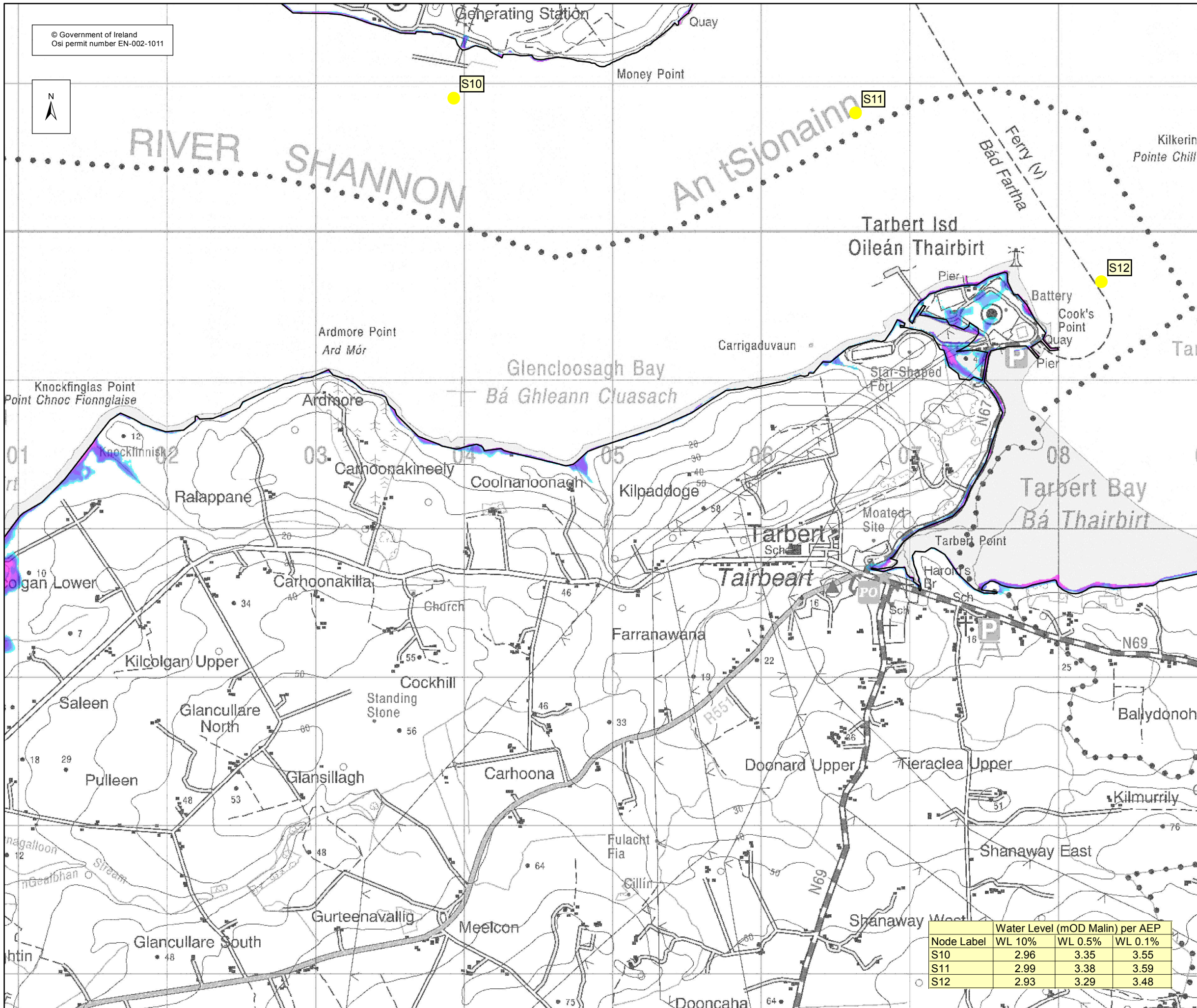
Figure No. : SH / RA / DEP / 1 Revision 0

Drawing Scale : 1:25,000 Plot Scale : 1:1 @ A3

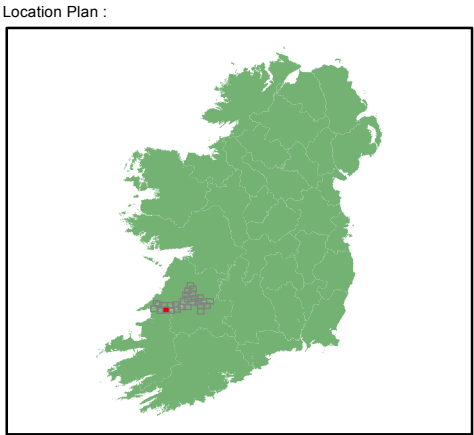








© Government of Ireland  
Osi permit number EN-002-1011



DEPTH MAP 0.5%AEP

Legend:

Depth Grid

- 0 - 0.25 m
- 0.25 - 0.50 m
- 0.50 - 1 m
- 1.00 - 1.50 m
- 1.50 - 2.00 m
- > 2.00 m

- High Water Mark (HWM)
- Node Point
- S18 Node Label (refer to table)

USER NOTE :

USERS OF THESE MAPS SHOULD REFER TO THE DETAILED DESCRIPTION OF THEIR DERIVATION, LIMITATIONS IN ACCURACY AND GUIDANCE AND CONDITIONS OF USE PROVIDED AT THE FRONT OF THIS BOUND VOLUME. IF THIS MAP DOES NOT FORM PART OF A BOUND VOLUME, IT SHOULD NOT BE USED FOR ANY PURPOSE.



Elmwood House  
74 Boucher Road  
Belfast  
BT 12 6RZ  
Northern Ireland



Office of Public Works  
17-19 Lower Hatch Street  
Dublin 2  
Ireland

Project :  
IRISH COASTAL PROTECTION STRATEGY  
STUDY - PHASE IV

Map :  
SHANNON ESTUARY FLOOD DEPTH MAP

Map Type : DEPTH  
Return Period 0.5% AEP EVENT  
Source : TIDAL FLOODING  
Map area : RURAL AREA  
Scenario : CURRENT

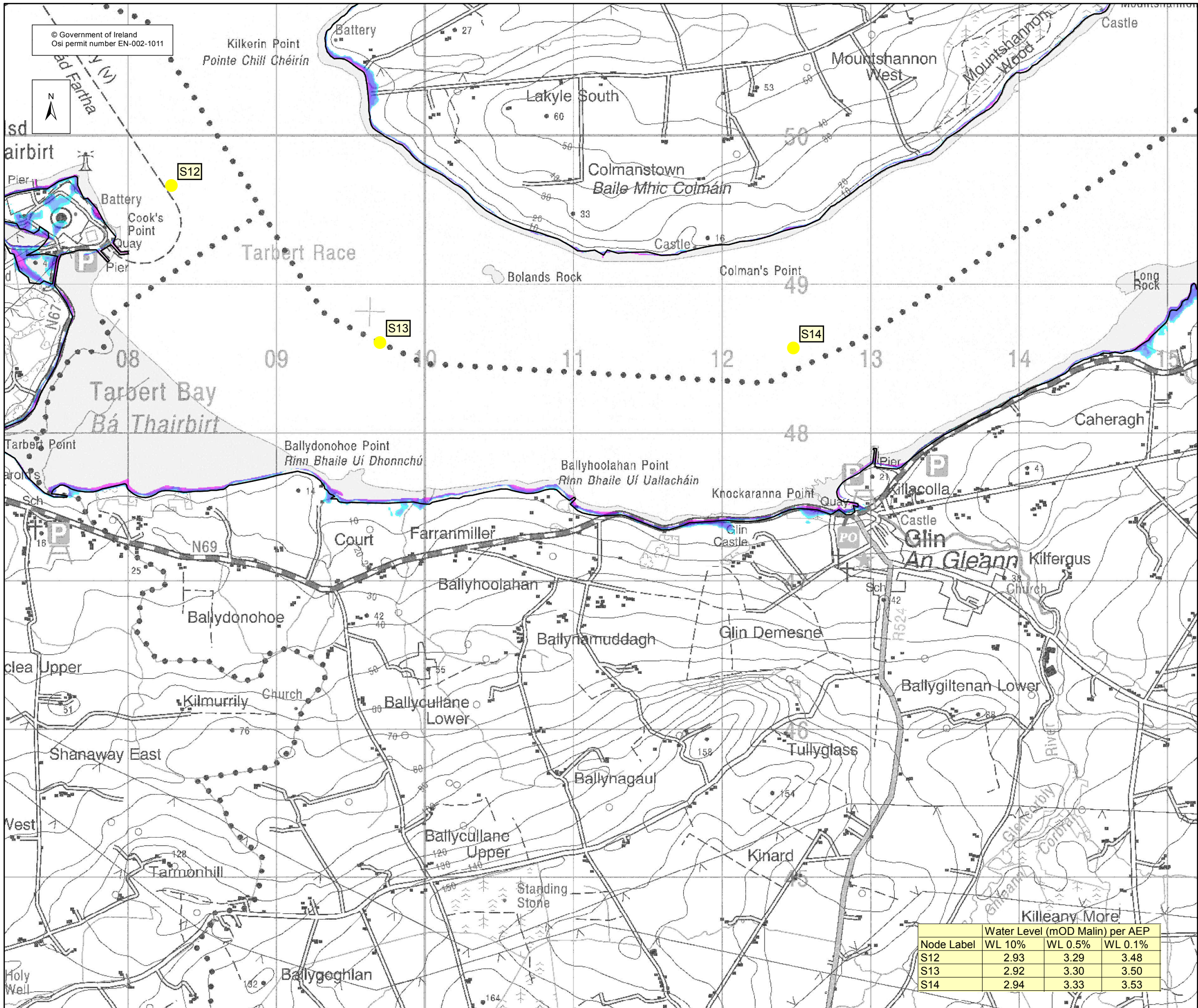
Figure By : PJW Date : JUN 2011  
Checked By : JMC Date : JUN 2011

Figure No. : SH / RA / DEP / 3 Revision : 0

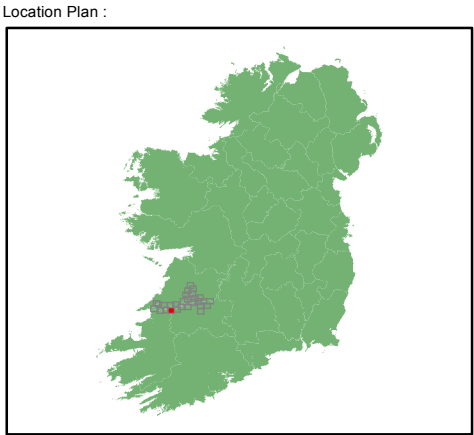
Drawing Scale : 1:25,000 Plot Scale : 1:1 @ A3

Node Label	Water Level (mOD Malin) per AEP		
	WL 10%	WL 0.5%	WL 0.1%
S10	2.96	3.35	3.55
S11	2.99	3.38	3.59
S12	2.93	3.29	3.48





Node Label	Water Level (mOD Malin) per AEP		
	WL 10%	WL 0.5%	WL 0.1%
S12	2.93	3.29	3.48
S13	2.92	3.30	3.50
S14	2.94	3.33	3.53



DEPTH MAP 0.5%AEP

Legend:

Depth Grid

- 0 - 0.25 m
- 0.25 - 0.50 m
- 0.50 - 1 m
- 1.00 - 1.50 m
- 1.50 - 2.00 m
- > 2.00 m

- High Water Mark (HWM)
- Node Point
- S18 Node Label (refer to table)

USER NOTE :

USERS OF THESE MAPS SHOULD REFER TO THE DETAILED DESCRIPTION OF THEIR DERIVATION, LIMITATIONS IN ACCURACY AND GUIDANCE AND CONDITIONS OF USE PROVIDED AT THE FRONT OF THIS BOUND VOLUME. IF THIS MAP DOES NOT FORM PART OF A BOUND VOLUME, IT SHOULD NOT BE USED FOR ANY PURPOSE.



Elmwood House  
74 Boucher Road  
Belfast  
BT 12 6RZ  
Northern Ireland



Office of Public Works  
17-19 Lower Hatch Street  
Dublin 2  
Ireland

Project :  
IRISH COASTAL PROTECTION STRATEGY  
STUDY - PHASE IV

Map :  
SHANNON ESTUARY FLOOD DEPTH MAP

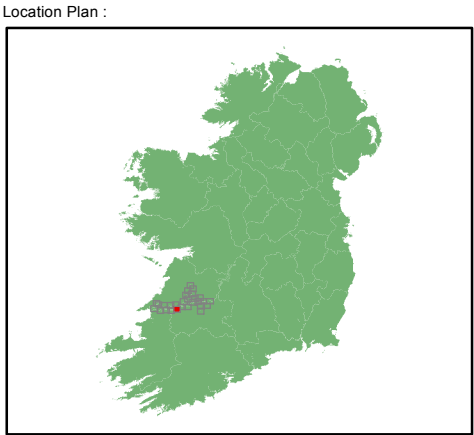
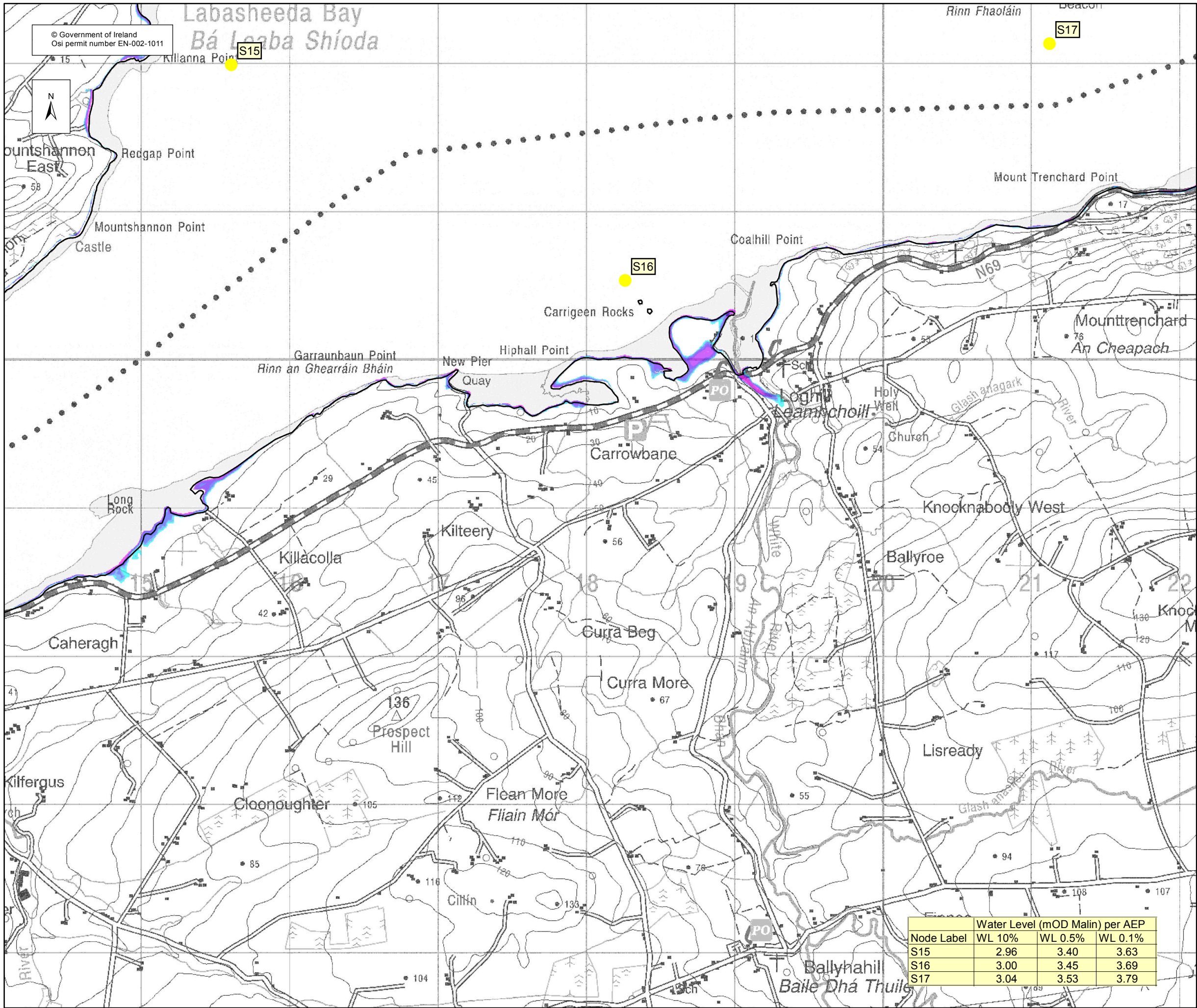
Map Type : DEPTH  
Return Period 0.5% AEP EVENT  
Source : TIDAL FLOODING  
Map area : RURAL AREA  
Scenario : CURRENT

Figure By : PJW Date : JUN 2011  
Checked By : JMC Date : JUN 2011

Figure No. : SH / RA / DEP / 4 Revision 0

Drawing Scale : 1:25,000 Plot Scale : 1:1 @ A3





**DEPTH MAP 0.5%AEP**

Legend:

**Depth Grid**

- 0 - 0.25 m
- 0.25 - 0.50 m
- 0.50 - 1 m
- 1.00 - 1.50 m
- 1.50 - 2.00 m
- > 2.00 m

- High Water Mark (HWM)
- Node Point
- S18 Node Label (refer to table)

**USER NOTE :**

USERS OF THESE MAPS SHOULD REFER TO THE DETAILED DESCRIPTION OF THEIR DERIVATION, LIMITATIONS IN ACCURACY AND GUIDANCE AND CONDITIONS OF USE PROVIDED AT THE FRONT OF THIS BOUND VOLUME. IF THIS MAP DOES NOT FORM PART OF A BOUND VOLUME, IT SHOULD NOT BE USED FOR ANY PURPOSE.



Elmwood House  
74 Boucher Road  
Belfast  
BT 12 6RZ  
Northern Ireland



Office of Public Works  
17-19 Lower Hatch Street  
Dublin 2  
Ireland

Project :  
**IRISH COASTAL PROTECTION STRATEGY  
STUDY - PHASE IV**

Map :  
**SHANNON ESTUARY FLOOD DEPTH MAP**

Map Type : DEPTH  
Return Period 0.5% AEP EVENT  
Source : TIDAL FLOODING  
Map area : RURAL AREA  
Scenario : CURRENT

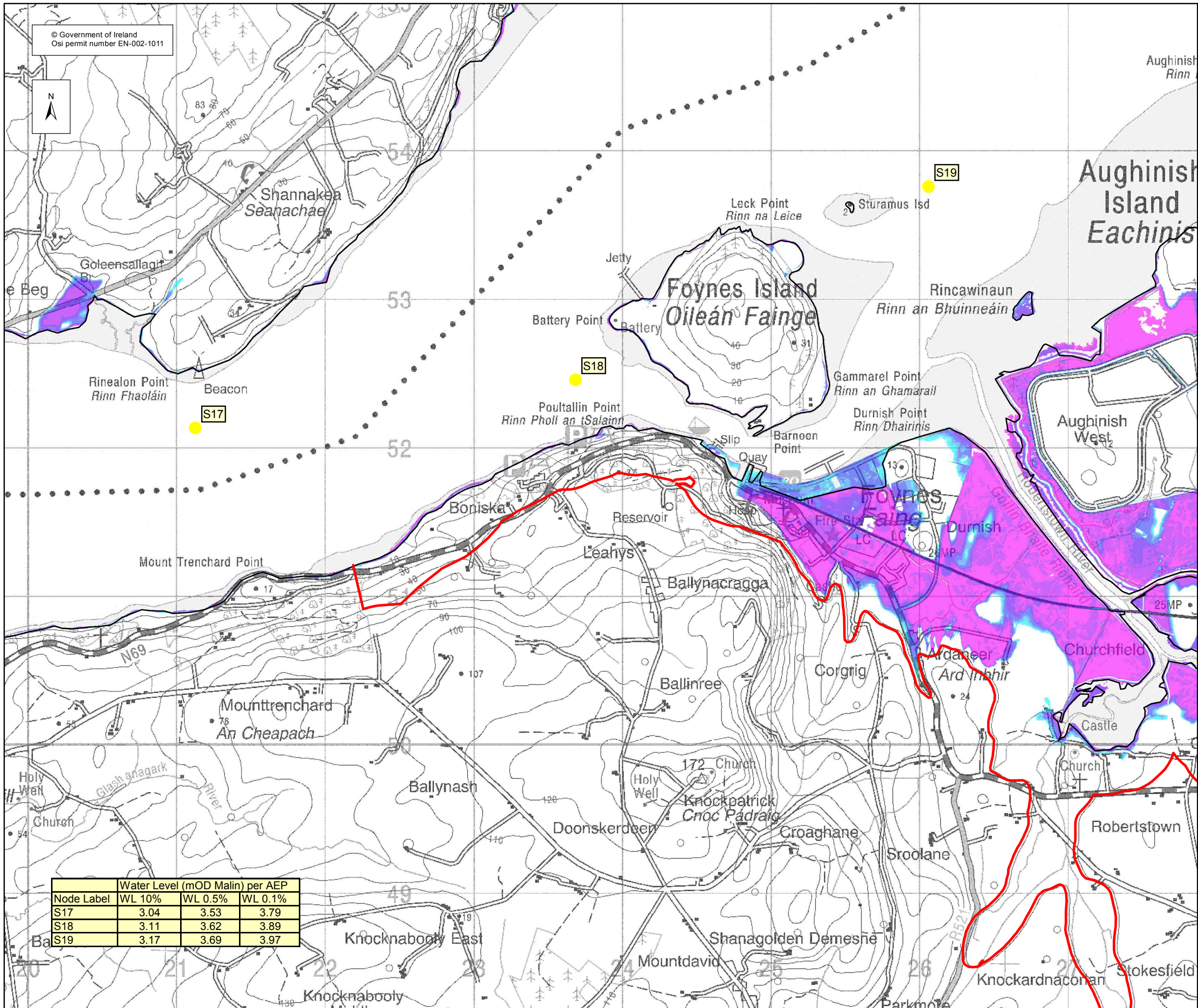
Figure By : PJW Date : JUN 2011  
Checked By : JMC Date : JUN 2011

Figure No. : SH / RA / DEP / 5 Revision : 0

Drawing Scale : 1:25,000 Plot Scale : 1:1 @ A3

Node Label	Water Level (mOD Malin) per AEP		
	WL 10%	WL 0.5%	WL 0.1%
S15	2.96	3.40	3.63
S16	3.00	3.45	3.69
S17	3.04	3.53	3.79

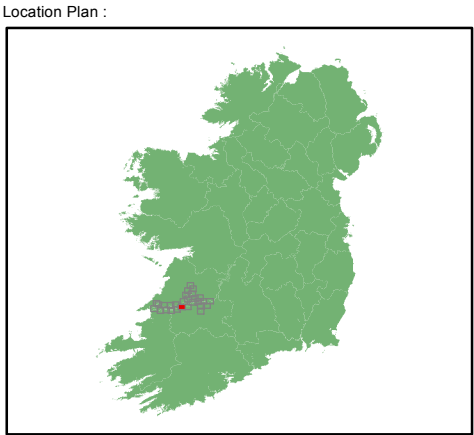




© Government of Ireland  
Osi permit number EN-002-1011



Water Level (mOD Malin) per AEP			
Node Label	WL 10%	WL 0.5%	WL 0.1%
S17	3.04	3.53	3.79
S18	3.11	3.62	3.89
S19	3.17	3.69	3.97



DEPTH MAP 0.5%AEP

Legend:

Depth Grid

- 0 - 0.25 m
- 0.25 - 0.50 m
- 0.50 - 1 m
- 1.00 - 1.50 m
- 1.50 - 2.00 m
- > 2.00 m

Inland DTM Extent

High Water Mark (HWM)

Node Point

S 18 Node Label (refer to table)

USER NOTE :

USERS OF THESE MAPS SHOULD REFER TO THE DETAILED DESCRIPTION OF THEIR DERIVATION, LIMITATIONS IN ACCURACY AND GUIDANCE AND CONDITIONS OF USE PROVIDED AT THE FRONT OF THIS BOUND VOLUME. IF THIS MAP DOES NOT FORM PART OF A BOUND VOLUME, IT SHOULD NOT BE USED FOR ANY PURPOSE.



Elmwood House  
74 Boucher Road  
Belfast  
BT 12 6RZ  
Northern Ireland



Office of Public Works  
17-19 Lower Hatch Street  
Dublin 2  
Ireland

Project :  
IRISH COASTAL PROTECTION STRATEGY  
STUDY - PHASE IV

Map :  
SHANNON ESTUARY FLOOD DEPTH MAP

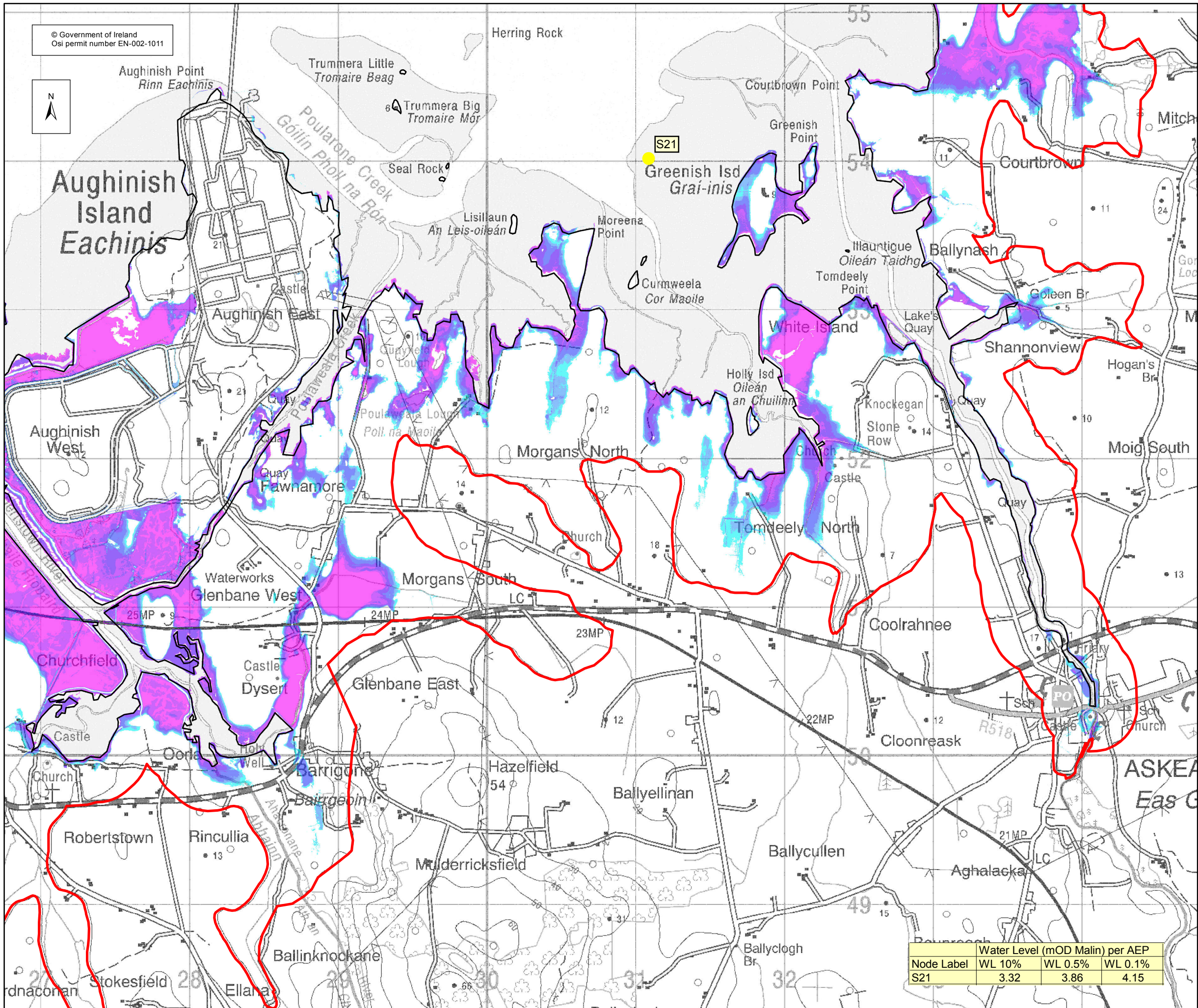
Map Type : DEPTH  
Return Period 0.5% AEP EVENT  
Source : TIDAL FLOODING  
Map area : RURAL AREA  
Scenario : CURRENT

Figure By : PJW Date : JUN 2011  
Checked By : JMC Date : JUN 2011

Figure No. : SH / RA / DEP / 6 Revision : 0

Drawing Scale : 1:25,000 Plot Scale : 1:1 @ A3





© Government of Ireland  
Osi permit number EN-002-1011



Aughinish Island  
*Eachinis*

Herring Rock

Trummera Little  
*Tromaíre Beag*

Trummera Big  
*Tromaíre Mór*

Poularene Creek  
*Góilin Phol na Bón*

Seal Rock

Lisillaun  
*An Leis-oileán*

Moreena Point

Greenish Isd  
*Grai-inis*

Cumweela  
*Cor Maoile*

Courtbrown Point

Greenish Point

Illantigue  
*Oileán Taidhg*

Tomdeely Point

Ballynash

Lake's Quay

Goleen Br

Shannonview

Hogan's Br

Moig South

Coolrahee

Cloonreask

ASKEA  
*Eas G*

Ballyellinan

Ballycullen

Aghalacka

Ballyclogh Br

Ballinknockane

Mulderricksfield

Hazelfield

Glenbane East

Castle Dysert

Waterworks

Glenbane West

Quay Fawnamore

Morgans North

Morgans South

Tomdeely North

White Island

Holly Isd  
*Oileán an Chuilinn*

Poularene Lough  
*Poll na Maoile*

Poularene Lough  
*Poll na Maoile*

Poularene Lough  
*Poll na Maoile*

Poularene Lough  
*Poll na Maoile*

Poularene Lough  
*Poll na Maoile*

Poularene Lough  
*Poll na Maoile*

Poularene Lough  
*Poll na Maoile*

Aughinish Point  
*Rinn Eachinis*

Aughinish West

Aughinish East

Aughinish East

Aughinish East

Aughinish East

Aughinish East

Aughinish Point  
*Rinn Eachinis*

Aughinish West

Aughinish East

Aughinish East

Aughinish East

Aughinish East

Aughinish East

Aughinish Point  
*Rinn Eachinis*

Aughinish West

Aughinish East

Aughinish East

Aughinish East

Aughinish East

Aughinish East

Aughinish Point  
*Rinn Eachinis*

Aughinish West

Aughinish East

Aughinish East

Aughinish East

Aughinish East

Aughinish East

Aughinish Point  
*Rinn Eachinis*

Aughinish West

Aughinish East

Aughinish East

Aughinish East

Aughinish East

Aughinish East

Aughinish Point  
*Rinn Eachinis*

Aughinish West

Aughinish East

Aughinish East

Aughinish East

Aughinish East

Aughinish East

Aughinish Point  
*Rinn Eachinis*

Aughinish West

Aughinish East

Aughinish East

Aughinish East

Aughinish East

Aughinish East

Aughinish Point  
*Rinn Eachinis*

Aughinish West

Aughinish East

Aughinish East

Aughinish East

Aughinish East

Aughinish East

Aughinish Point  
*Rinn Eachinis*

Aughinish West

Aughinish East

Aughinish East

Aughinish East

Aughinish East

Aughinish East

Aughinish Point  
*Rinn Eachinis*

Aughinish West

Aughinish East

Aughinish East

Aughinish East

Aughinish East

Aughinish East

Aughinish Point  
*Rinn Eachinis*

Aughinish West

Aughinish East

Aughinish East

Aughinish East

Aughinish East

Aughinish East

Aughinish Point  
*Rinn Eachinis*

Aughinish West

Aughinish East

Aughinish East

Aughinish East

Aughinish East

Aughinish East

Aughinish Point  
*Rinn Eachinis*

Aughinish West

Aughinish East

Aughinish East

Aughinish East

Aughinish East

Aughinish East

Aughinish Point  
*Rinn Eachinis*

Aughinish West

Aughinish East

Aughinish East

Aughinish East

Aughinish East

Aughinish East

Aughinish Point  
*Rinn Eachinis*

Aughinish West

Aughinish East

Aughinish East

Aughinish East

Aughinish East

Aughinish East

Aughinish Point  
*Rinn Eachinis*

Aughinish West

Aughinish East

Aughinish East

Aughinish East

Aughinish East

Aughinish East

Aughinish Point  
*Rinn Eachinis*

Aughinish West

Aughinish East

Aughinish East

Aughinish East

Aughinish East

Aughinish East

Aughinish Point  
*Rinn Eachinis*

Aughinish West

Aughinish East

Aughinish East

Aughinish East

Aughinish East

Aughinish East

Aughinish Point  
*Rinn Eachinis*

Aughinish West

Aughinish East

Aughinish East

Aughinish East

Aughinish East

Aughinish East

Aughinish Point  
*Rinn Eachinis*

Aughinish West

Aughinish East

Aughinish East

Aughinish East

Aughinish East

Aughinish East

Aughinish Point  
*Rinn Eachinis*

Aughinish West

Aughinish East

Aughinish East

Aughinish East

Aughinish East

Aughinish East

Aughinish Point  
*Rinn Eachinis*

Aughinish West

Aughinish East

Aughinish East

Aughinish East

Aughinish East

Aughinish East

Aughinish Point  
*Rinn Eachinis*

Aughinish West

Aughinish East

Aughinish East

Aughinish East

Aughinish East

Aughinish East

Aughinish Point  
*Rinn Eachinis*

Aughinish West

Aughinish East

Aughinish East

Aughinish East

Aughinish East

Aughinish East

Aughinish Point  
*Rinn Eachinis*

Aughinish West

Aughinish East

Aughinish East

Aughinish East

Aughinish East

Aughinish East

Aughinish Point  
*Rinn Eachinis*

Aughinish West

Aughinish East

Aughinish East

Aughinish East

Aughinish East

Aughinish East

Aughinish Point  
*Rinn Eachinis*

Aughinish West

Aughinish East

Aughinish East

Aughinish East

Aughinish East

Aughinish East

Aughinish Point  
*Rinn Eachinis*

Aughinish West

Aughinish East

Aughinish East

Aughinish East

Aughinish East

Aughinish East

Aughinish Point  
*Rinn Eachinis*

Aughinish West

Aughinish East

Aughinish East

Aughinish East

Aughinish East

Aughinish East

Aughinish Point  
*Rinn Eachinis*

Aughinish West

Aughinish East

Aughinish East

Aughinish East

Aughinish East

Aughinish East

Aughinish Point  
*Rinn Eachinis*

Aughinish West

Aughinish East

Aughinish East

Aughinish East

Aughinish East

Aughinish East

Aughinish Point  
*Rinn Eachinis*

Aughinish West

Aughinish East

Aughinish East

Aughinish East

Aughinish East

Aughinish East

Aughinish Point  
*Rinn Eachinis*

Aughinish West

Aughinish East

Aughinish East

Aughinish East

Aughinish East

Aughinish East

Aughinish Point  
*Rinn Eachinis*

Aughinish West

Aughinish East

Aughinish East

Aughinish East

Aughinish East

Aughinish East

Aughinish Point  
*Rinn Eachinis*

Aughinish West

Aughinish East

Aughinish East

Aughinish East

Aughinish East

Aughinish East

Aughinish Point  
*Rinn Eachinis*

Aughinish West

Aughinish East

Aughinish East

Aughinish East

Aughinish East

Aughinish East

Aughinish Point  
*Rinn Eachinis*

Aughinish West

Aughinish East

Aughinish East

Aughinish East

Aughinish East

Aughinish East

Aughinish Point  
*Rinn Eachinis*

Aughinish West

Aughinish East

Aughinish East

Aughinish East

Aughinish East

Aughinish East

Aughinish Point  
*Rinn Eachinis*

Aughinish West

Aughinish East

Aughinish East

Aughinish East

Aughinish East

Aughinish East

Aughinish Point  
*Rinn Eachinis*

Aughinish West

Aughinish East

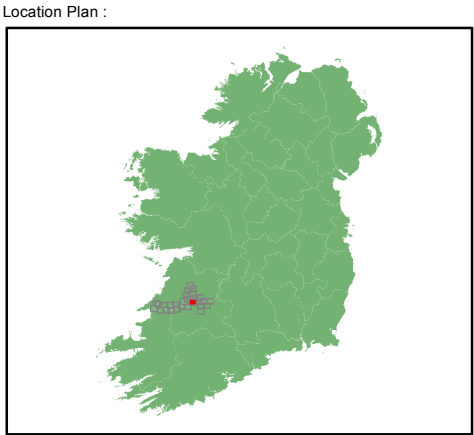
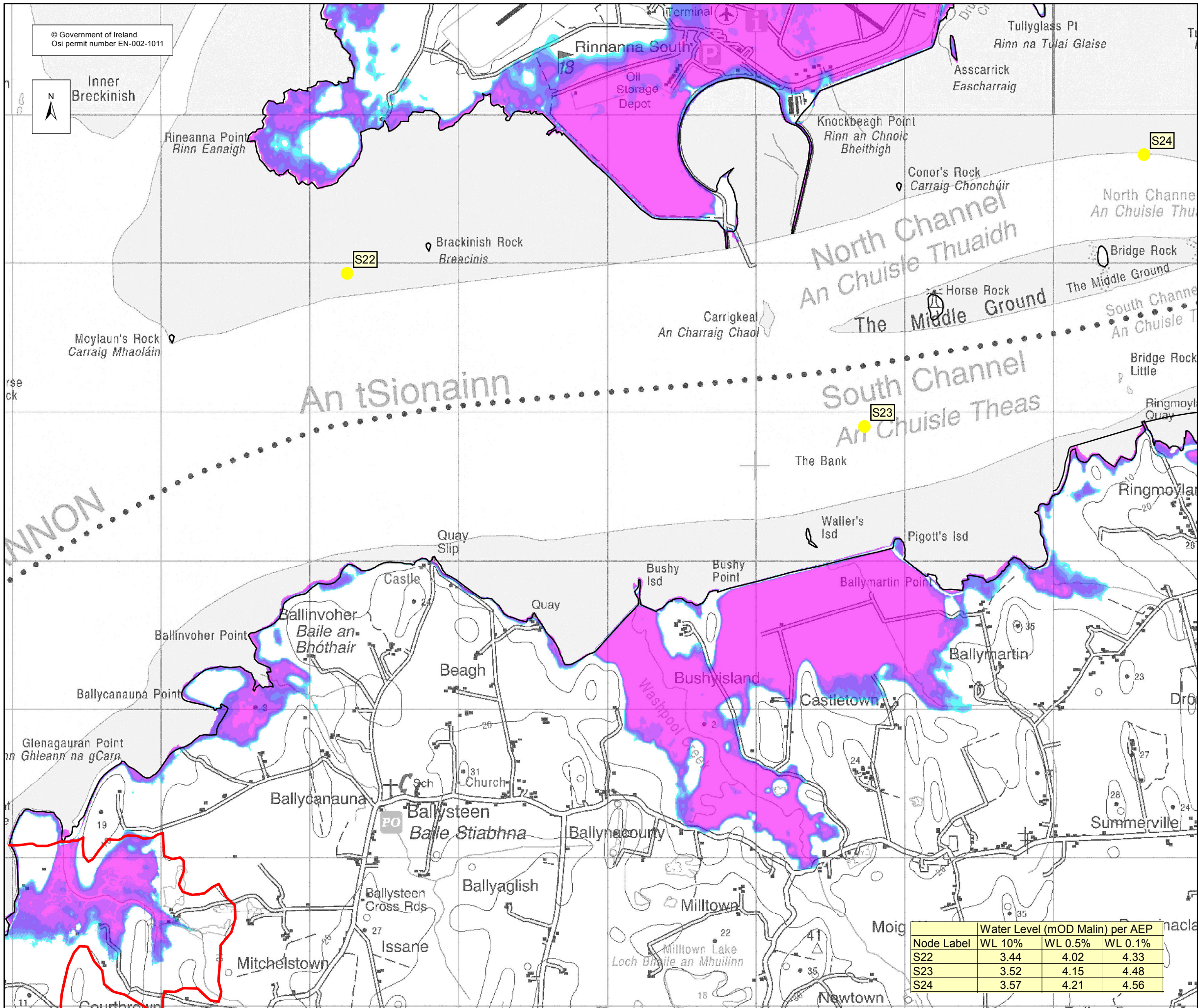
Aughinish East

Aughinish East

Aughinish East

Aughinish East





**DEPTH MAP 0.5%AEP**

Legend:

**Depth Grid**

- 0 - 0.25 m
- 0.25 - 0.50 m
- 0.50 - 1 m
- 1.00 - 1.50 m
- 1.50 - 2.00 m
- > 2.00 m

— Inland DTM Extent

— High Water Mark (HWM)

● Node Point

**S 18** Node Label (refer to table)

**USER NOTE :**

USERS OF THESE MAPS SHOULD REFER TO THE DETAILED DESCRIPTION OF THEIR DERIVATION, LIMITATIONS IN ACCURACY AND GUIDANCE AND CONDITIONS OF USE PROVIDED AT THE FRONT OF THIS BOUND VOLUME. IF THIS MAP DOES NOT FORM PART OF A BOUND VOLUME, IT SHOULD NOT BE USED FOR ANY PURPOSE.



Elmwood House  
74 Boucher Road  
Belfast  
BT 12 6RZ  
Northern Ireland



Office of Public Works  
17-19 Lower Hatch Street  
Dublin 2  
Ireland

Project :  
**IRISH COASTAL PROTECTION STRATEGY  
STUDY - PHASE IV**

Map :  
**SHANNON ESTUARY FLOOD DEPTH MAP**

Map Type : DEPTH  
Return Period 0.5% AEP EVENT  
Source : TIDAL FLOODING  
Map area : RURAL AREA  
Scenario : CURRENT

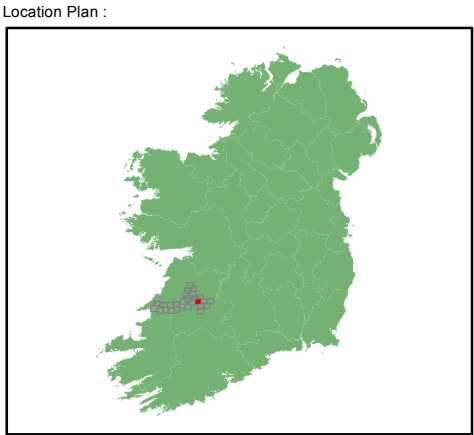
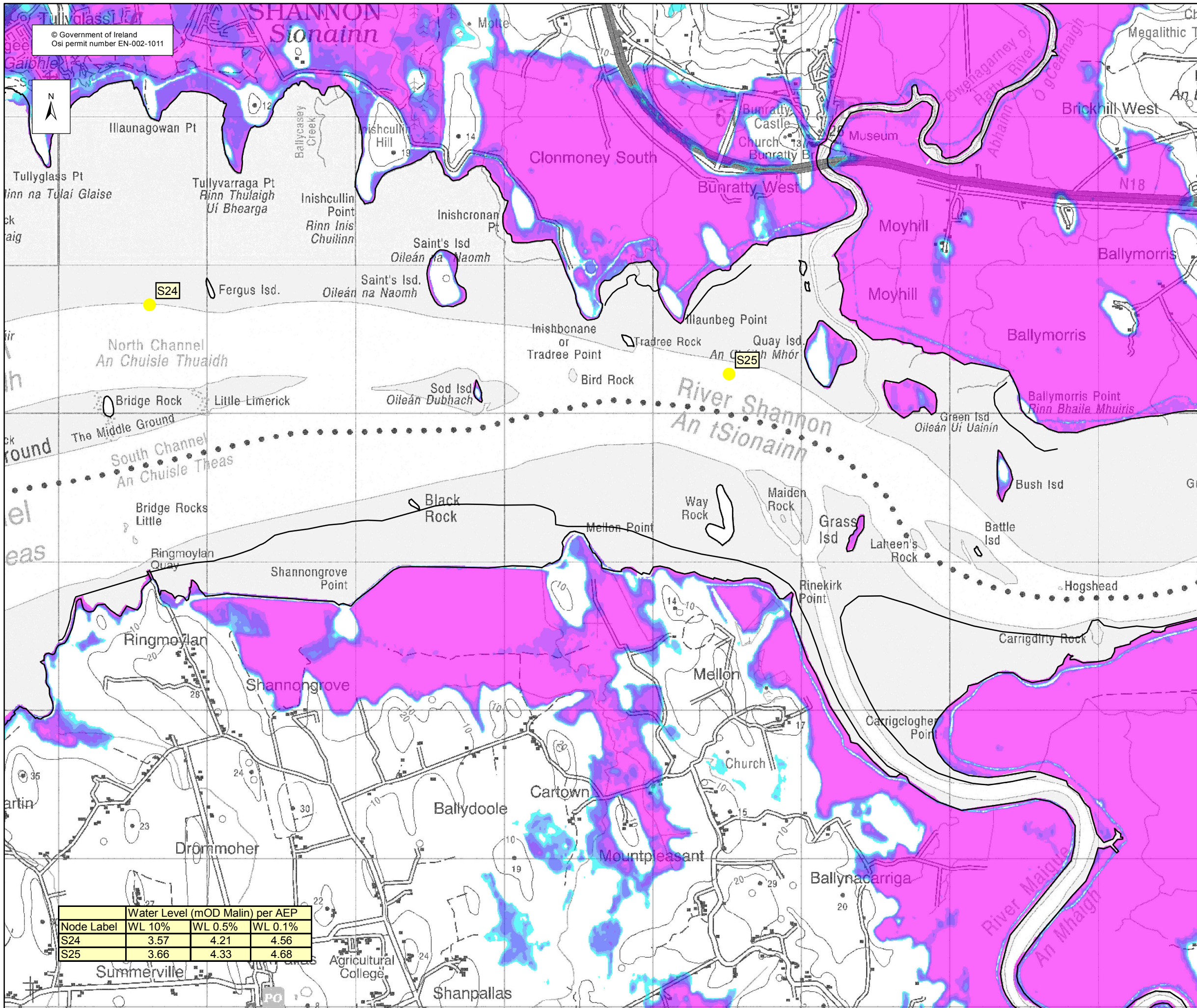
Figure By : PJW Date : JUN 2011  
Checked By : JMC Date : JUN 2011

Figure No. : SH / RA / DEP / 8 Revision : 0

Drawing Scale : 1:25,000 Plot Scale : 1:1 @ A3

Node Label	Water Level (mOD Malin) per AEP		
	WL 10%	WL 0.5%	WL 0.1%
S22	3.44	4.02	4.33
S23	3.52	4.15	4.48
S24	3.57	4.21	4.56

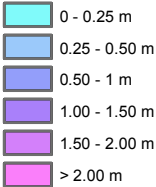




DEPTH MAP 0.5%AEP

Legend:

Depth Grid



- High Water Mark (HWM)  
● Node Point  
S18 Node Label (refer to table)

USER NOTE :

USERS OF THESE MAPS SHOULD REFER TO THE DETAILED DESCRIPTION OF THEIR DERIVATION, LIMITATIONS IN ACCURACY AND GUIDANCE AND CONDITIONS OF USE PROVIDED AT THE FRONT OF THIS BOUND VOLUME. IF THIS MAP DOES NOT FORM PART OF A BOUND VOLUME, IT SHOULD NOT BE USED FOR ANY PURPOSE.



Elmwood House  
74 Boucher Road  
Belfast  
BT 12 6RZ  
Northern Ireland



Office of Public Works  
17-19 Lower Hatch Street  
Dublin 2  
Ireland

Project :  
IRISH COASTAL PROTECTION STRATEGY  
STUDY - PHASE IV

Map :  
SHANNON ESTUARY FLOOD DEPTH MAP

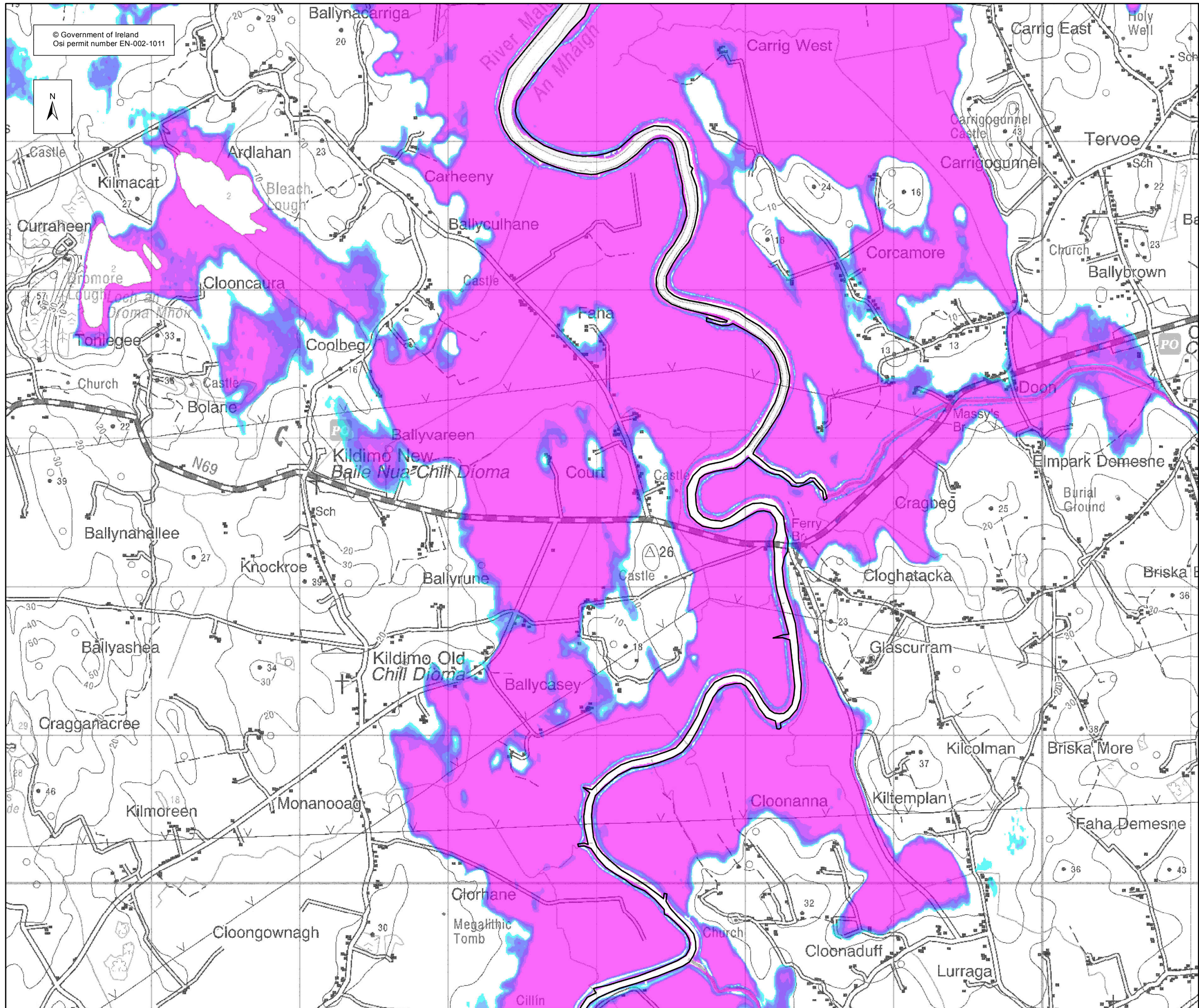
Map Type : DEPTH  
Return Period 0.5% AEP EVENT  
Source : TIDAL FLOODING  
Map area : RURAL AREA  
Scenario : CURRENT

Figure By : PJW Date : JUN 2011  
Checked By : JMC Date : JUN 2011

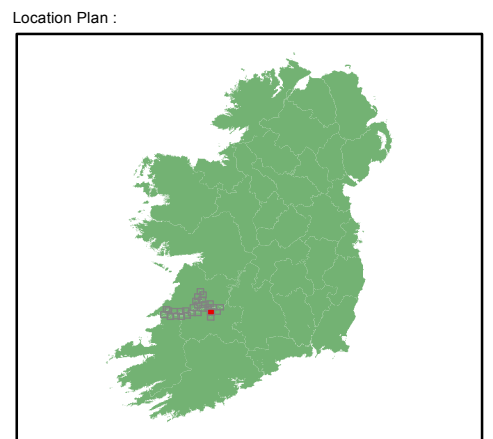
Figure No. : SH / RA / DEP / 9 Revision : 0

Drawing Scale : 1:25,000 Plot Scale : 1:1 @ A3





© Government of Ireland  
Osi permit number EN-002-1011



### DEPTH MAP 0.5%AEP

Legend:

#### Depth Grid

- 0 - 0.25 m
- 0.25 - 0.50 m
- 0.50 - 1 m
- 1.00 - 1.50 m
- 1.50 - 2.00 m
- > 2.00 m

- High Water Mark (HWM)
- Node Point
- S18 Node Label (refer to table)

#### USER NOTE :

USERS OF THESE MAPS SHOULD REFER TO THE DETAILED DESCRIPTION OF THEIR DERIVATION, LIMITATIONS IN ACCURACY AND GUIDANCE AND CONDITIONS OF USE PROVIDED AT THE FRONT OF THIS BOUND VOLUME. IF THIS MAP DOES NOT FORM PART OF A BOUND VOLUME, IT SHOULD NOT BE USED FOR ANY PURPOSE.

Elmwood House  
74 Boucher Road  
Belfast  
BT 12 6RZ  
Northern Ireland

Office of Public Works  
17-19 Lower Hatch Street  
Dublin 2  
Ireland

Project :  
IRISH COASTAL PROTECTION STRATEGY  
STUDY - PHASE IV

Map :  
SHANNON ESTUARY FLOOD DEPTH MAP

Map Type : DEPTH  
Return Period : 0.5% AEP EVENT  
Source : TIDAL FLOODING  
Map area : RURAL AREA  
Scenario : CURRENT

Figure By : PJW Date : JUN 2011  
Checked By : JMC Date : JUN 2011

Figure No. : SH / RA / DEP / 10 Revision : 0

Drawing Scale : 1:25,000 Plot Scale : 1:1 @ A3

